

# Warehouse Management System

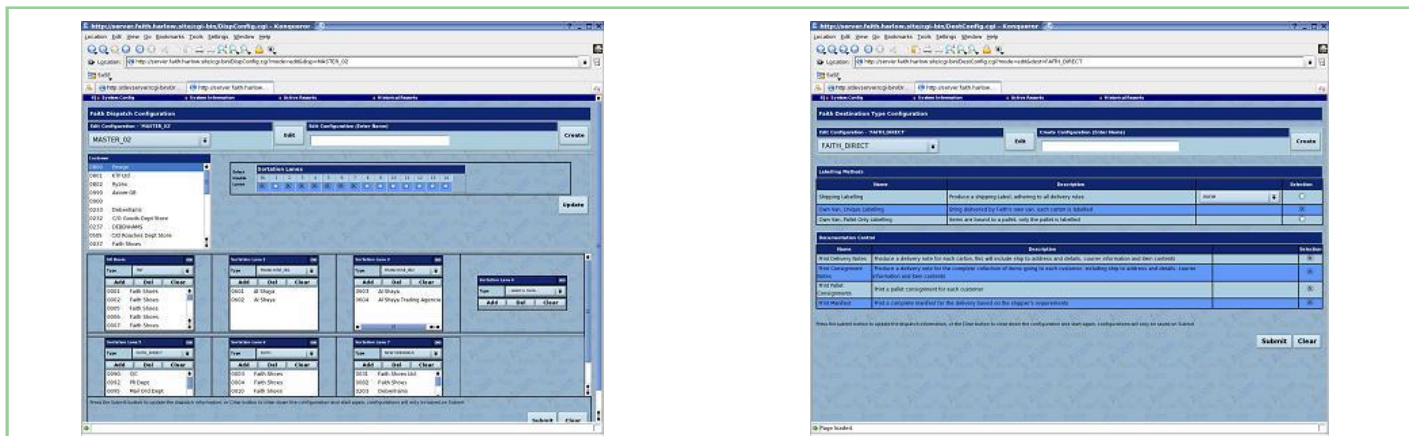
London – United Kingdom



Cost effective R/F based real time warehouse management solution

- ü Symbol R/F equipment
- ü Goods in
- ü Returns
- ü Stock Management
- ü Order Picking
- ü Dispatch
- ü Conveyor control and interfaces
- ü Carrier Interfaces (DHL, TNT etc.)

Case Study



As part of relocation to larger premises, Faith Shoes had a requirement to automate the handling of product and implement a total warehouse management system.

Initially, as a sub-contractor to a conveyor supplier, Axiom implemented the automation, product routing and tracking systems. Axiom was subsequently awarded with the warehouse management system order directly.

The system allows Faith to automatically receive cartons from suppliers, while the system in real time updates data files allowing for automatic allocation of stock and supplier payment. The system intelligently routes received cartons to one of seven drop points according to stock put away requirements.

During 2003 Axiom were commissioned to modify and upgrade the warehouse management system to take on board changes within the business.

Axiom rolled out a new fully tailored (written in house) WM system, based on core modules used in many other systems implemented by Axiom. The brief was to handle all incoming and outgoing goods from the warehouse, and take control of satellite warehousing operations.

Axiom used Symbol R/F equipment to drive users around the warehouse, handling all the usual warehouse management functions :-

- ü Goods In (this included interfaces with Axiom's cross docking systems)
- ü Store and Customer Returns, including interface and control with at least one remote warehouse
- ü Stock put away, at both carton and item level
- ü Stock management, including stock movements, stock counting (P/I), stock consolidation
- ü Order picking, both at a carton and item level
- ü Dispatch, automatically via the conveyor system, or manually onto pallets

The system interface with Faith's head office ERP systems (soon to be replaced with Microsoft's Axapta system). The W/M modules are real time utilising full R/F control, with web base user interfaces for control and reporting functions. Other functions include interfaces with DHL, TNT, shipping label production, manifest's and web based door to door delivery systems.

Faith have dealt exclusively with Axiom with ongoing enhancements to the warehouse management systems, extensions to the conveyor systems on a new mezzanine level, print and apply labelling machine and total 24 hour support package including mechanical, electrical and software elements.